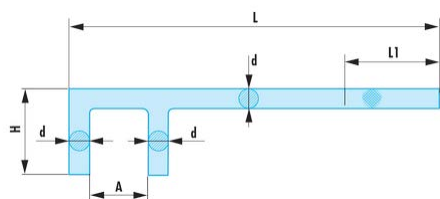


**VH32.300SR** VH.SR - Clés à valve ADF**Description :**

- Alliage spécial Cuivre-Béryllium antidéflagrant et antimagnétique.
- Manche moleté.

|          |      |
|----------|------|
| A [mm]:  | 32   |
| d [mm]:  | 15,0 |
| H [mm]:  | 50   |
| L [mm]:  | 300  |
| L1 [mm]: | 120  |
| [g]:     | 540  |

